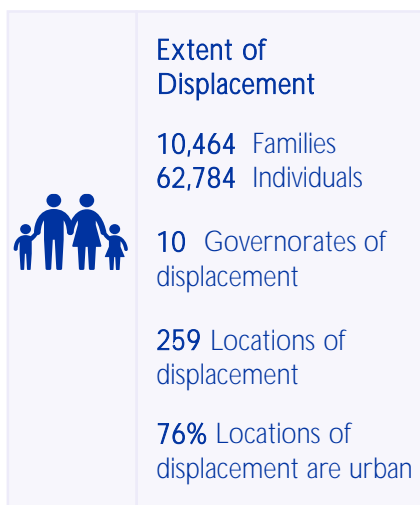


## DISPLACED FAMILIES IN CENTRAL AND SOUTHERN GOVERNORATES



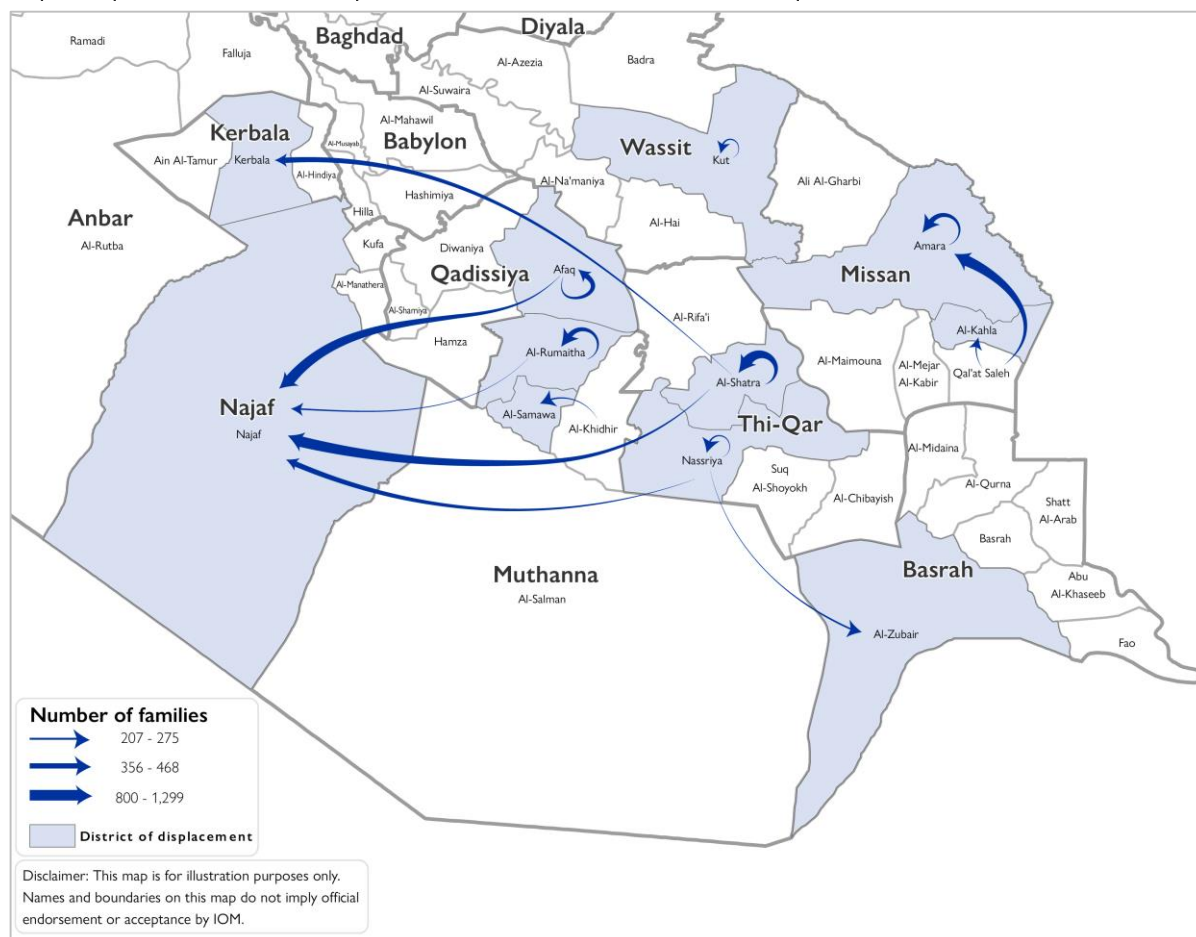
DTM has been tracking climate-induced displacement across the central and southern regions of Iraq since June 2018. Drought, land degradation and increased salinity in important rivers and tributaries continues to place a strain on the agricultural sector, with many families unable to guarantee sufficient and sustainable livelihoods in rural areas. The IOM-DTM tracking of climate-induced displacement aims to provide data on the number and location of vulnerable families forced to displace due to climatic and environmental factors.

Data collection for this update took place between 1 and 15 September 2022. Data are collected through IOM's Rapid Assessment and Response Teams (RARTs), who are deployed across Iraq (20% of enumerators are female). IOM's RARTs collect data through interviews with key informants utilizing a large, well-established network of over 9,500 key informants that includes community leaders, mukhtars, local authorities and security forces.

As of 15 September 2022, 10,464 families (62,784 individuals) remain displaced because of drought conditions across ten governorates. Of these, 3,854 families are displaced within their district of origin (37%). The displaced families are dispersed across 259 locations, with the majority (76%) being urban locations.

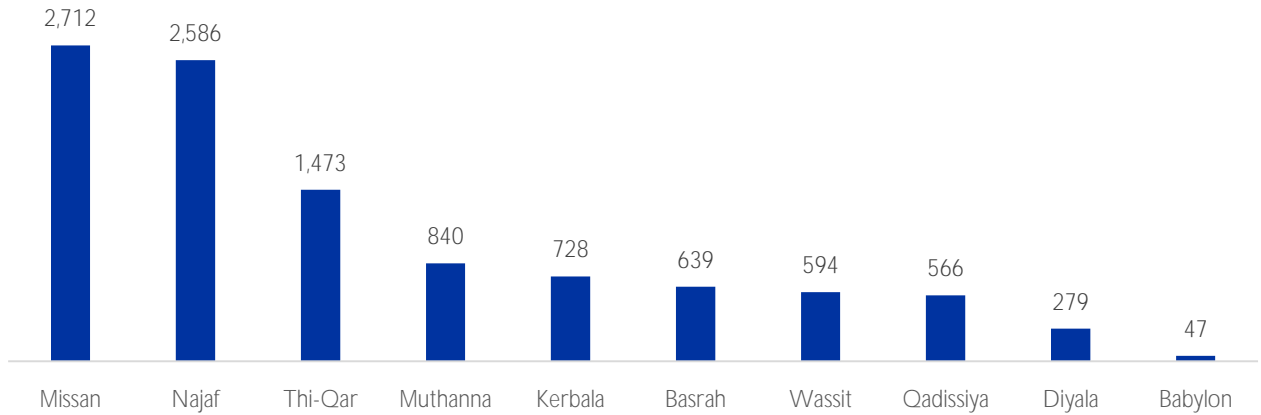
The primary governorate of origin for these displaced families is Thi-Qar (3,387), followed by Missan (2,912), Qadissiya (1,438) and Muthanna (1,131). Al-Shatra district in Thi-Qar governorate has 2,162 families displaced by drought. Other districts with significant climate-induced displacement include Qal'at Saleh district in Missan governorate (1,574 families), Afaq in Qadissiya governorate (1,405 families) and Nassriya in Thi-Qar governorate (1,020 families). In Missan governorate, water scarcity in the marshes has also contributed to a deterioration in living conditions and the death of livestock.

Map 1: Top 15 climate-induced displacement flows in central and southern Iraq<sup>1</sup>



<sup>1</sup> The map depicts the top 15 flows from their district of origin to their district of displacement. Intradistrict displacement is shown as a circular arrow.

Figure 1. Number of families displaced due to drought by governorate of displacement



The number of families in climate-induced displacement expanded in this round of data collection as key informants referred RART teams to previously unassessed locations of displacement. This was most notable in Muthanna and Missan governorates where 22 and 13 new locations were assessed, respectively. The number of locations and climate-displaced families is expected to increase each round as the network of key informants expands. Nonetheless, the large share of individuals displaced in 2022 (41%) compared to previous years also suggests a recent deterioration in environmental conditions.

Missan governorate hosts the largest number of families experiencing climate-induced displacement (2,712), followed by Najaf (2,586) and Thi-Qar governorates (1,473). In Missan governorate, districts hosting high numbers of displaced families include Amara district, which hosts 2,201 families, originating primarily from Qal'at Saleh (59%). In Najaf Governorate, most families are in Najaf district (2,566). In Thi-Qar Governorate, Al-Shatra district hosts 990 families, all of whom were displaced intradistrict.

Map 2: Districts hosting families affected by climate-induced displacement

